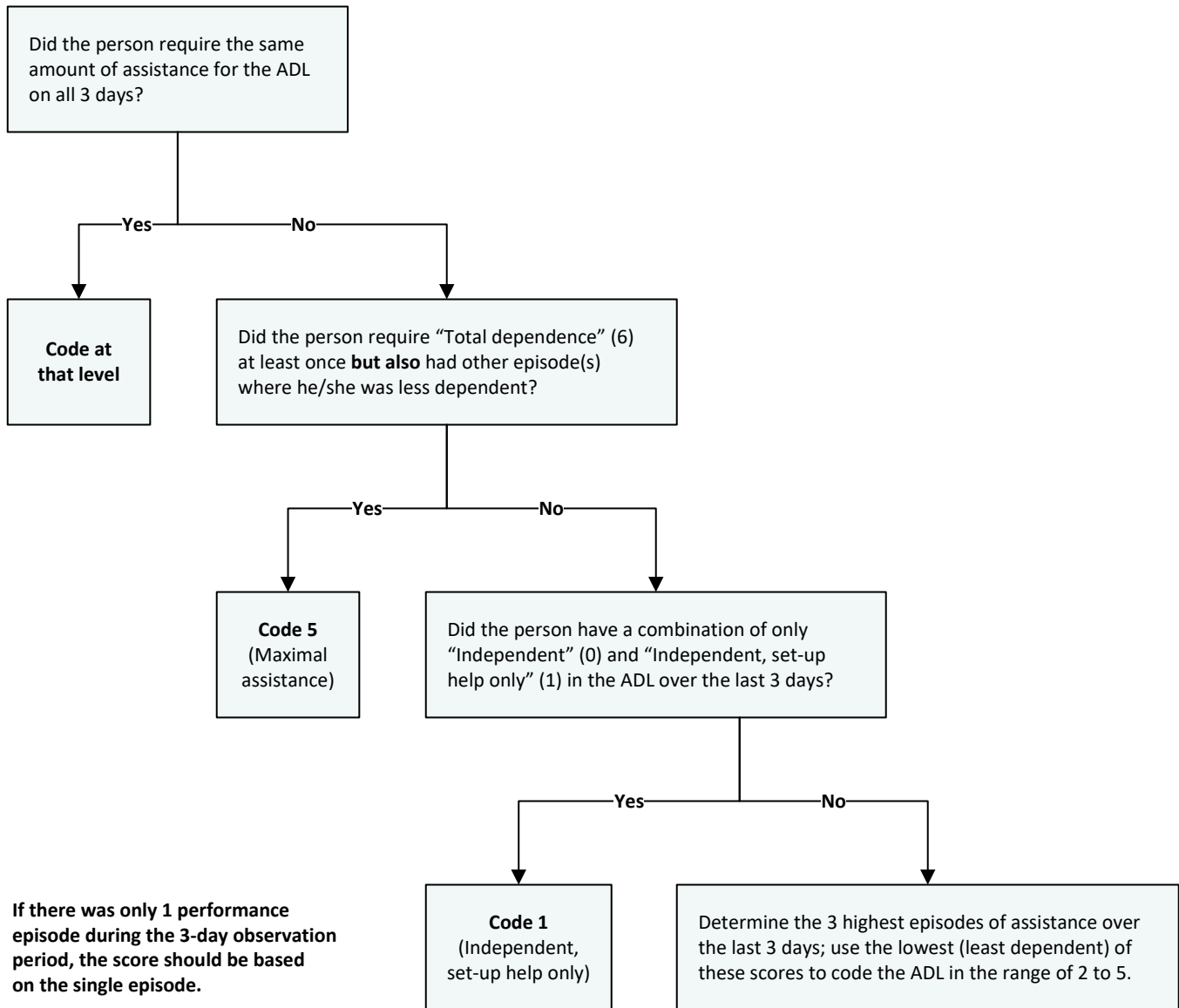




interRAI LTCF — ADL Self-Performance (G1)



Used with permission of interRAI Canada.



ADL subtasks

These examples of subtasks may be helpful when assessing how the person performs each activity of daily living (G1).

Note: This is not a comprehensive list.

Bathing (G1a)	Dressing (G1c–d)	Transfer toilet (G1g)	Toilet use (G1h)	Eating (G1j)
<ul style="list-style-type: none"> • Turns on/off water • Adjusts temperature • Lathers body • Rinses body • Dries with towel • Transfers in/out of tub <p><i>Exclude back and hair</i></p>	<ul style="list-style-type: none"> • Locates • Selects • Obtains • Grasps • Puts on • Removes • Snaps • Zips 	<ul style="list-style-type: none"> • Stands • Sits • Lifts • Turns 	<p>Use of toilet, commode, urinal; management of ostomy and catheter</p> <ul style="list-style-type: none"> • Removes clothes • Opens clothes • Adjusts clothes • Cleans self • Tears paper • Uses paper 	<ul style="list-style-type: none"> • Opens • Pours • Unwraps • Cuts • Scoops • Spears • Uses utensils • Uses fingers when necessary • Prepares tube feed • Prepares TPN

Examples of set-up help

Personal hygiene

Providing the person with a washbasin or grooming article

Toilet use

Handing the person a bedpan or placing articles to change ostomy appliance within reach

Walking

Handing the person a walker or cane

Eating

Cutting meat, opening containers, carrying a tray to the table or giving 1 food category at a time

© 2022 Canadian Institute for Health Information

interRAI LTCF © interRAI Corporation, Washington, D.C., 1990–2019. Modified with permission for Canadian use under licence to the Canadian Institute for Health Information. Canadianized items and their descriptions © Canadian Institute for Health Information, 2022.

How to cite this document:

Canadian Institute for Health Information. *interRAI LTCF — ADL Self-Performance (G1)* [job aid]. Ottawa, ON: CIHI; 2022.



Appendix

Text alternative for figure

If the person required the same amount of assistance on all 3 days, code at that level. If the person required Total dependence once but was less dependent on other occasions in the last 3 days, code 5. If the person had a combination of Independent and Independent, set-up help only in the last 3 days, code 1. If none of these criteria were met, determine the 3 highest episodes of assistance over the last 3 days and code the lowest of those scores.